

Acta Crystallographica Section E

## Structure Reports

Online

ISSN 1600-5368

2-Bromo-*N*-(2-hydroxy-5-methylphenyl)-2-methylpropanamideRodolfo Moreno-Fuquen,<sup>a\*</sup> David E. Quintero,<sup>a</sup> Fabio Zuluaga,<sup>a</sup> Carlos Grande<sup>b</sup> and Alan R. Kennedy<sup>c</sup>

<sup>a</sup>Departamento de Química – Facultad de Ciencias, Universidad del Valle, Apartado 25360, Santiago de Cali, Colombia, <sup>b</sup>Departamento de Química – Facultad de Ciencias, Universidad ICESI, Santiago de Cali, Colombia, and <sup>c</sup>WestCHEM, Department of Pure and Applied Chemistry, University of Strathclyde, 295 Cathedral Street, Glasgow G1 1XL, Scotland  
Correspondence e-mail: rodimo26@yahoo.es

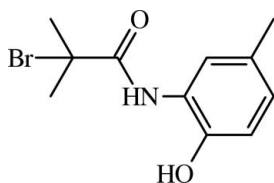
Received 14 August 2011; accepted 16 August 2011

Key indicators: single-crystal X-ray study;  $T = 123$  K; mean  $\sigma(\text{C}-\text{C}) = 0.003$  Å;  $R$  factor = 0.035;  $wR$  factor = 0.085; data-to-parameter ratio = 19.6.

In the title molecule,  $\text{C}_{11}\text{H}_{14}\text{BrNO}_2$ , there is twist between the mean plane of the amide group and the benzene ring [the C–N–C torsion angle is  $-172.1(2)^\circ$ ]. The amide H atom forms an intramolecular hydrogen bond with the Br atom. In the crystal, intermolecular O–H $\cdots$ O and weak C–H $\cdots$ O hydrogen bonds link molecules into a chain along [100].

## Related literature

For functional initiators in polymerization processes, see: Matyjaszewski & Xia (2001); Kato *et al.* (1995). For related structures, see: Moreno-Fuquen *et al.* (2011a,b). For hydrogen-bond graph-set motifs, see: Etter (1990).



## Experimental

## Crystal data

$\text{C}_{11}\text{H}_{14}\text{BrNO}_2$   
 $M_r = 272.14$   
Monoclinic,  $P2_1/c$   
 $a = 7.4510(2)$  Å  
 $b = 13.8498(4)$  Å  
 $c = 12.8646(4)$  Å  
 $\beta = 116.324(2)^\circ$

$V = 1189.89(6)$  Å<sup>3</sup>  
 $Z = 4$   
Mo  $K\alpha$  radiation  
 $\mu = 3.44$  mm<sup>-1</sup>  
 $T = 123$  K  
 $0.30 \times 0.10 \times 0.08$  mm

## Data collection

Oxford Diffraction Xcalibur E diffractometer  
Absorption correction: multi-scan (*CrysAlis PRO*; Oxford Diffraction, 2009)  
 $T_{\min} = 0.650$ ,  $T_{\max} = 1.000$

5803 measured reflections  
2886 independent reflections  
2437 reflections with  $I > 2\sigma(I)$   
 $R_{\text{int}} = 0.023$

## Refinement

$R[F^2 > 2\sigma(F^2)] = 0.035$   
 $wR(F^2) = 0.085$   
 $S = 1.05$   
2886 reflections  
147 parameters  
1 restraint

H atoms treated by a mixture of independent and constrained refinement  
 $\Delta\rho_{\text{max}} = 0.73$  e Å<sup>-3</sup>  
 $\Delta\rho_{\text{min}} = -0.46$  e Å<sup>-3</sup>

Table 1

Hydrogen-bond geometry (Å, °).

| D–H $\cdots$ A                   | D–H      | H $\cdots$ A | D $\cdots$ A | D–H $\cdots$ A |
|----------------------------------|----------|--------------|--------------|----------------|
| O2–H1H $\cdots$ O1 <sup>i</sup>  | 0.85 (1) | 1.81 (1)     | 2.659 (2)    | 179 (3)        |
| C1–H1C $\cdots$ O2 <sup>ii</sup> | 0.98     | 2.53         | 3.445 (3)    | 156            |
| N1–H1N $\cdots$ Br1              | 0.87 (3) | 2.47 (3)     | 3.031 (2)    | 123 (2)        |

Symmetry codes: (i)  $x + 1, y, z$ ; (ii)  $x - 1, y, z$ .

Data collection: *CrysAlis CCD* (Oxford Diffraction, 2009); cell refinement: *CrysAlis CCD*; data reduction: *CrysAlis CCD*; program(s) used to solve structure: *SHELXS97* (Sheldrick, 2008); program(s) used to refine structure: *SHELXL97* (Sheldrick, 2008); molecular graphics: *ORTEP-3* (Farrugia, 1997) and *Mercury* (Macrae *et al.*, 2006); software used to prepare material for publication: *WinGX* (Farrugia, 1999) and *PARST* (Nardelli, 1995).

RMF is grateful to the Spanish Research Council (CSIC) for the use of a free-of-charge licence to the Cambridge Structural Database. RMF and FZ also thank the Universidad del Valle, Colombia, and CG thanks the Universidad ICESI for partial financial support.

Supplementary data and figures for this paper are available from the IUCr electronic archives (Reference: TK2780).

## References

- Etter, M. (1990). *Acc. Chem. Res.* **23**, 120–126.  
Farrugia, L. J. (1997). *J. Appl. Cryst.* **30**, 565.  
Farrugia, L. J. (1999). *J. Appl. Cryst.* **32**, 837–838.  
Kato, M., Kamigaito, M., Sawamoto, M. & Higashimura, T. (1995). *Macromolecules*, **28**, 1721–1723.  
Macrae, C. F., Edgington, P. R., McCabe, P., Pidcock, E., Shields, G. P., Taylor, R., Towler, M. & van de Streek, J. (2006). *J. Appl. Cryst.* **39**, 453–457.  
Matyjaszewski, K. & Xia, J. (2001). *Chem. Rev.* **101**, 2921–2990.  
Moreno-Fuquen, R., Quintero, D. E., Zuluaga, F., Haiduke, R. L. A. & Kennedy, A. R. (2011a). *Acta Cryst.* **E67**, o659.  
Moreno-Fuquen, R., Quintero, D. E., Zuluaga, F., Kennedy, A. R. & De Almeida Santos, R. H. (2011b). *Acta Cryst.* **E67**, o1543.  
Nardelli, M. (1995). *J. Appl. Cryst.* **28**, 659.  
Oxford Diffraction (2009). *CrysAlis CCD* and *CrysAlis PRO*. Oxford Diffraction Ltd, Yarnton, England.  
Sheldrick, G. M. (2008). *Acta Cryst.* **A64**, 112–122.

## supporting information

*Acta Cryst.* (2011). E67, o2446 [doi:10.1107/S1600536811033150]

**2-Bromo-*N*-(2-hydroxy-5-methylphenyl)-2-methylpropanamide**

**Rodolfo Moreno-Fuquen, David E. Quintero, Fabio Zuluaga, Carlos Grande and Alan R. Kennedy**

**S1. Comment**

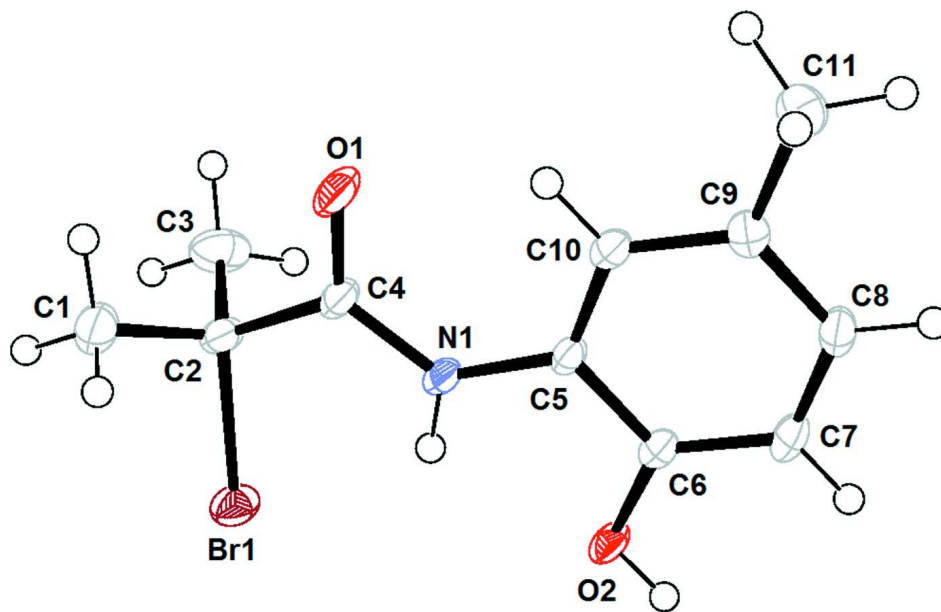
The title compound, (I), is part of a search for new functional initiators in polymerization processes (Matyjaszewski & Xia, 2001; Kato *et al.*, 1995), which is carried out by the Polymer Group of Universidad del Valle (Moreno-Fuquen *et al.*, 2011*a*; Moreno-Fuquen *et al.*, 2011*b*). The molecular structure of (I) is shown in Fig. 1. There is a twist between the mean plane of the amide group and the benzene ring giving a C4—N1—C5—C6 torsion angle of  $-172.1(2)^\circ$ . This value is very different to that presented in other related systems:  $[12.7(4)$  and  $-31.2(5)^\circ$ , respectively (Moreno-Fuquen *et al.*, 2011*a*; Moreno-Fuquen *et al.*, 2011*b*)]. The difference in the value of torsion angle with respect to other related systems, is probably due to the presence of the hydroxyl group in the benzene ring in (I). The crystal packing is stabilized by O—H $\cdots$ O and weak C—H $\cdots$ O intermolecular hydrogen bonds which link the molecules into one dimensional chains along [100] incorporating C(7) graphs motifs (Etter, 1990); see Table 1 and Fig. 2. Additionally, an intramolecular N—H $\cdots$ Br hydrogen bond is observed (Table 1).

**S2. Experimental**

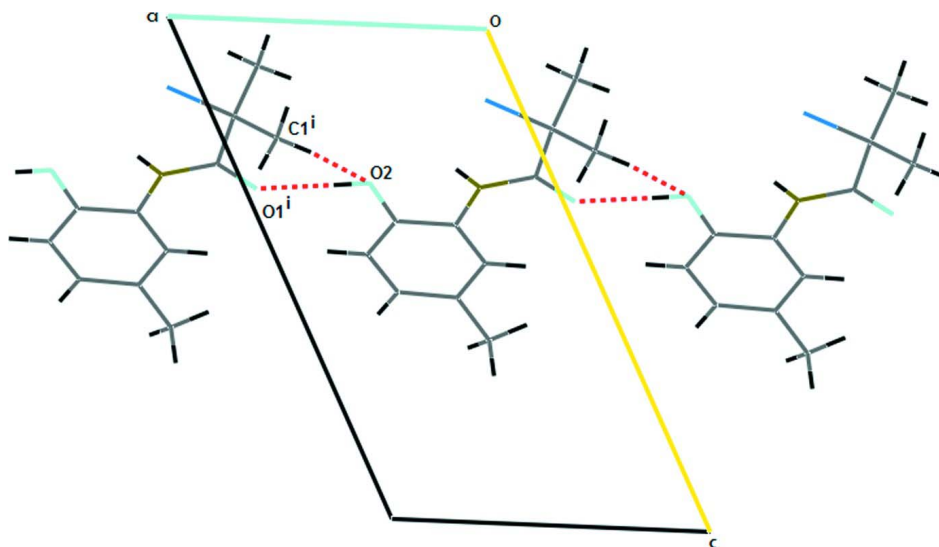
2-Hydroxy-5-methyl aniline (3.512 mmol, 0.432 g), triethylamine (0.635 mmol, 0.064 g) were mixed in a 100 mL round bottom flask. Then, a solution of 2-bromo isobutryl bromide (0.807 g) in anhydrous THF (5 ml) was added drop wise, under an argon stream. The reaction was carried out in a dry bag overnight under magnetic stirring. The solid was filtered off and dichloromethane (20 ml) added to the organic phase which was washed with brine (50 ml) followed by water (10 ml). The solution was concentrated at low pressure affording colourless crystals and recrystallized from a solution of hexane and ethyl acetate (*v/v* 80:20). M.pt. 385 (1) K.

**S3. Refinement**

The H-atoms were positioned geometrically [C—H = 0.95 Å for aromatic-H and C—H = 0.98 Å for methyl-H, and with  $U_{\text{iso}}(\text{H}) = (1.2 \text{ and } 1.5 \text{ times } U_{\text{eq}} \text{ of the parent atom, respectively}]$ . The hydroxyl-H1H and amide-H1N atoms were located in a difference Fourier map and were refined freely.

**Figure 1**

Molecular structure of (I) showing atom numbering scheme and with displacement ellipsoids drawn at the 50% probability level. H atoms are shown as spheres of arbitrary radius.

**Figure 2**

Part of the crystal structure of (I), showing the formation of a one dimensional chain along [100]. Dashed lines indicate hydrogen bonds. Symmetry code: (i)  $1 + x, +y, z$ .

### 2-Bromo-*N*-(2-hydroxy-5-methylphenyl)-2-methylpropanamide

#### Crystal data

$C_{11}H_{14}BrNO_2$

$M_r = 272.14$

Monoclinic,  $P2_1/c$

Hall symbol:  $-P 2_1bc$

$a = 7.4510 (2) \text{ \AA}$

$b = 13.8498 (4) \text{ \AA}$

$c = 12.8646 (4) \text{ \AA}$

$\beta = 116.324 (2)^\circ$

$V = 1189.89 (6) \text{ \AA}^3$   
 $Z = 4$   
 $F(000) = 552$   
 $D_x = 1.519 \text{ Mg m}^{-3}$   
 Melting point: 385(1) K  
 Mo  $K\alpha$  radiation,  $\lambda = 0.71073 \text{ \AA}$

Cell parameters from 3082 reflections

$\theta = 3.1\text{--}29.4^\circ$   
 $\mu = 3.44 \text{ mm}^{-1}$   
 $T = 123 \text{ K}$   
 Tablet, colourless  
 $0.30 \times 0.10 \times 0.08 \text{ mm}$

*Data collection*

Oxford Diffraction Xcalibur E  
 diffractometer  
 Radiation source: fine-focus sealed tube  
 Graphite monochromator  
 $\omega$  scans  
 Absorption correction: multi-scan  
 (CrysAlis PRO; Oxford Diffraction, 2009)  
 $T_{\min} = 0.650$ ,  $T_{\max} = 1.000$

5803 measured reflections  
 2886 independent reflections  
 2437 reflections with  $I > 2\sigma(I)$   
 $R_{\text{int}} = 0.023$   
 $\theta_{\max} = 29.4^\circ$ ,  $\theta_{\min} = 3.1^\circ$   
 $h = -8 \rightarrow 10$   
 $k = -16 \rightarrow 19$   
 $l = -16 \rightarrow 17$

*Refinement*

Refinement on  $F^2$   
 Least-squares matrix: full  
 $R[F^2 > 2\sigma(F^2)] = 0.035$   
 $wR(F^2) = 0.085$   
 $S = 1.05$   
 2886 reflections  
 147 parameters  
 1 restraint  
 Primary atom site location: structure-invariant  
 direct methods

Secondary atom site location: difference Fourier  
 map  
 Hydrogen site location: inferred from  
 neighbouring sites  
 H atoms treated by a mixture of independent  
 and constrained refinement  
 $w = 1/[\sigma^2(F_o^2) + (0.0441P)^2 + 0.2346P]$   
 where  $P = (F_o^2 + 2F_c^2)/3$   
 $(\Delta/\sigma)_{\max} < 0.001$   
 $\Delta\rho_{\max} = 0.73 \text{ e \AA}^{-3}$   
 $\Delta\rho_{\min} = -0.46 \text{ e \AA}^{-3}$

*Special details*

**Geometry.** All esds (except the esd in the dihedral angle between two l.s. planes) are estimated using the full covariance matrix. The cell esds are taken into account individually in the estimation of esds in distances, angles and torsion angles; correlations between esds in cell parameters are only used when they are defined by crystal symmetry. An approximate (isotropic) treatment of cell esds is used for estimating esds involving l.s. planes.

**Refinement.** Refinement of  $F^2$  against ALL reflections. The weighted R-factor  $wR$  and goodness of fit  $S$  are based on  $F^2$ , conventional R-factors  $R$  are based on  $F$ , with  $F$  set to zero for negative  $F^2$ . The threshold expression of  $F^2 > 2\sigma(F^2)$  is used only for calculating R-factors(gt) etc. and is not relevant to the choice of reflections for refinement. R-factors based on  $F^2$  are statistically about twice as large as those based on  $F$ , and R-factors based on ALL data will be even larger.

*Fractional atomic coordinates and isotropic or equivalent isotropic displacement parameters ( $\text{\AA}^2$ )*

|     | <i>x</i>    | <i>y</i>      | <i>z</i>     | $U_{\text{iso}}^*/U_{\text{eq}}$ |
|-----|-------------|---------------|--------------|----------------------------------|
| Br1 | 0.10479 (3) | 0.358681 (19) | 0.14350 (2)  | 0.02782 (10)                     |
| O1  | -0.0362 (3) | 0.54556 (15)  | 0.34215 (18) | 0.0387 (5)                       |
| O2  | 0.5930 (2)  | 0.53566 (12)  | 0.32150 (14) | 0.0219 (4)                       |
| N1  | 0.2461 (3)  | 0.51979 (14)  | 0.32142 (17) | 0.0190 (4)                       |
| C1  | -0.1738 (4) | 0.35819 (19)  | 0.2380 (3)   | 0.0317 (6)                       |
| H1A | -0.0742     | 0.3209        | 0.3025       | 0.048*                           |
| H1B | -0.2525     | 0.3146        | 0.1739       | 0.048*                           |
| H1C | -0.2629     | 0.3916        | 0.2638       | 0.048*                           |
| C2  | -0.0677 (3) | 0.43204 (18)  | 0.1973 (2)   | 0.0227 (5)                       |
| C3  | -0.2146 (4) | 0.4905 (2)    | 0.0933 (2)   | 0.0375 (7)                       |

|      |            |              |              |            |
|------|------------|--------------|--------------|------------|
| H3A  | -0.2935    | 0.4466       | 0.0296       | 0.056*     |
| H3B  | -0.1398    | 0.5352       | 0.0680       | 0.056*     |
| H3C  | -0.3043    | 0.5272       | 0.1158       | 0.056*     |
| C4   | 0.0531 (3) | 0.50331 (18) | 0.2951 (2)   | 0.0215 (5) |
| C5   | 0.3773 (3) | 0.58845 (16) | 0.39924 (19) | 0.0162 (4) |
| C6   | 0.5634 (3) | 0.59619 (17) | 0.39643 (19) | 0.0177 (4) |
| C7   | 0.7014 (3) | 0.66329 (17) | 0.4661 (2)   | 0.0220 (5) |
| H7   | 0.8263     | 0.6696       | 0.4635       | 0.026*     |
| C8   | 0.6582 (3) | 0.72175 (17) | 0.5400 (2)   | 0.0220 (5) |
| H8   | 0.7538     | 0.7681       | 0.5870       | 0.026*     |
| C9   | 0.4764 (3) | 0.71337 (16) | 0.54611 (19) | 0.0193 (5) |
| C10  | 0.3369 (3) | 0.64603 (15) | 0.4745 (2)   | 0.0182 (5) |
| H10  | 0.2123     | 0.6396       | 0.4774       | 0.022*     |
| C11  | 0.4344 (4) | 0.77409 (18) | 0.6301 (2)   | 0.0261 (5) |
| H11A | 0.4697     | 0.7376       | 0.7019       | 0.039*     |
| H11B | 0.2918     | 0.7907       | 0.5955       | 0.039*     |
| H11C | 0.5144     | 0.8334       | 0.6476       | 0.039*     |
| H1H  | 0.711 (2)  | 0.540 (2)    | 0.328 (3)    | 0.038 (8)* |
| H1N  | 0.297 (4)  | 0.4836 (19)  | 0.286 (2)    | 0.027 (7)* |

*Atomic displacement parameters (Å<sup>2</sup>)*

|     | $U^{11}$     | $U^{22}$     | $U^{33}$     | $U^{12}$     | $U^{13}$     | $U^{23}$      |
|-----|--------------|--------------|--------------|--------------|--------------|---------------|
| Br1 | 0.02120 (15) | 0.03380 (17) | 0.02828 (15) | 0.00141 (11) | 0.01082 (11) | -0.01028 (10) |
| O1  | 0.0186 (9)   | 0.0505 (13)  | 0.0535 (12)  | -0.0127 (9)  | 0.0219 (9)   | -0.0306 (10)  |
| O2  | 0.0130 (8)   | 0.0300 (9)   | 0.0261 (9)   | -0.0022 (7)  | 0.0118 (7)   | -0.0037 (7)   |
| N1  | 0.0128 (9)   | 0.0224 (10)  | 0.0239 (10)  | -0.0013 (8)  | 0.0100 (8)   | -0.0044 (8)   |
| C1  | 0.0248 (13)  | 0.0322 (15)  | 0.0411 (16)  | -0.0082 (11) | 0.0174 (12)  | -0.0120 (12)  |
| C2  | 0.0149 (11)  | 0.0267 (13)  | 0.0256 (12)  | 0.0011 (10)  | 0.0082 (9)   | -0.0070 (10)  |
| C3  | 0.0273 (14)  | 0.0417 (17)  | 0.0313 (15)  | 0.0126 (13)  | 0.0021 (11)  | -0.0042 (13)  |
| C4  | 0.0133 (11)  | 0.0265 (12)  | 0.0261 (12)  | -0.0020 (10) | 0.0101 (9)   | -0.0042 (10)  |
| C5  | 0.0106 (10)  | 0.0176 (11)  | 0.0183 (10)  | -0.0001 (9)  | 0.0044 (8)   | 0.0030 (8)    |
| C6  | 0.0138 (11)  | 0.0207 (12)  | 0.0183 (11)  | 0.0002 (9)   | 0.0069 (9)   | 0.0034 (9)    |
| C7  | 0.0143 (11)  | 0.0264 (13)  | 0.0250 (12)  | -0.0049 (10) | 0.0084 (9)   | 0.0024 (10)   |
| C8  | 0.0174 (11)  | 0.0216 (12)  | 0.0230 (12)  | -0.0054 (10) | 0.0053 (9)   | -0.0013 (9)   |
| C9  | 0.0202 (11)  | 0.0177 (11)  | 0.0169 (11)  | -0.0003 (10) | 0.0056 (9)   | 0.0025 (9)    |
| C10 | 0.0139 (11)  | 0.0206 (12)  | 0.0207 (11)  | 0.0004 (9)   | 0.0081 (9)   | 0.0024 (9)    |
| C11 | 0.0277 (13)  | 0.0257 (13)  | 0.0241 (12)  | -0.0011 (11) | 0.0110 (10)  | -0.0044 (10)  |

*Geometric parameters (Å, °)*

|        |            |        |           |
|--------|------------|--------|-----------|
| Br1—C2 | 1.988 (2)  | C3—H3C | 0.9800    |
| O1—C4  | 1.229 (3)  | C5—C10 | 1.387 (3) |
| O2—C6  | 1.367 (3)  | C5—C6  | 1.407 (3) |
| O2—H1H | 0.847 (10) | C6—C7  | 1.381 (3) |
| N1—C4  | 1.343 (3)  | C7—C8  | 1.391 (3) |
| N1—C5  | 1.412 (3)  | C7—H7  | 0.9500    |
| N1—H1N | 0.87 (3)   | C8—C9  | 1.396 (3) |

---

|              |             |               |             |
|--------------|-------------|---------------|-------------|
| C1—C2        | 1.520 (3)   | C8—H8         | 0.9500      |
| C1—H1A       | 0.9800      | C9—C10        | 1.396 (3)   |
| C1—H1B       | 0.9800      | C9—C11        | 1.508 (3)   |
| C1—H1C       | 0.9800      | C10—H10       | 0.9500      |
| C2—C3        | 1.531 (4)   | C11—H11A      | 0.9800      |
| C2—C4        | 1.537 (3)   | C11—H11B      | 0.9800      |
| C3—H3A       | 0.9800      | C11—H11C      | 0.9800      |
| C3—H3B       | 0.9800      |               |             |
|              |             |               |             |
| C6—O2—H1H    | 112 (2)     | C10—C5—C6     | 119.7 (2)   |
| C4—N1—C5     | 128.39 (19) | C10—C5—N1     | 125.84 (19) |
| C4—N1—H1N    | 115.9 (18)  | C6—C5—N1      | 114.43 (19) |
| C5—N1—H1N    | 115.7 (18)  | O2—C6—C7      | 124.29 (19) |
| C2—C1—H1A    | 109.5       | O2—C6—C5      | 116.13 (19) |
| C2—C1—H1B    | 109.5       | C7—C6—C5      | 119.6 (2)   |
| H1A—C1—H1B   | 109.5       | C6—C7—C8      | 120.2 (2)   |
| C2—C1—H1C    | 109.5       | C6—C7—H7      | 119.9       |
| H1A—C1—H1C   | 109.5       | C8—C7—H7      | 119.9       |
| H1B—C1—H1C   | 109.5       | C7—C8—C9      | 121.0 (2)   |
| C1—C2—C3     | 112.2 (2)   | C7—C8—H8      | 119.5       |
| C1—C2—C4     | 110.8 (2)   | C9—C8—H8      | 119.5       |
| C3—C2—C4     | 107.9 (2)   | C8—C9—C10     | 118.4 (2)   |
| C1—C2—Br1    | 106.92 (16) | C8—C9—C11     | 120.6 (2)   |
| C3—C2—Br1    | 106.75 (16) | C10—C9—C11    | 121.0 (2)   |
| C4—C2—Br1    | 112.25 (14) | C5—C10—C9     | 121.1 (2)   |
| C2—C3—H3A    | 109.5       | C5—C10—H10    | 119.5       |
| C2—C3—H3B    | 109.5       | C9—C10—H10    | 119.5       |
| H3A—C3—H3B   | 109.5       | C9—C11—H11A   | 109.5       |
| C2—C3—H3C    | 109.5       | C9—C11—H11B   | 109.5       |
| H3A—C3—H3C   | 109.5       | H11A—C11—H11B | 109.5       |
| H3B—C3—H3C   | 109.5       | C9—C11—H11C   | 109.5       |
| O1—C4—N1     | 123.2 (2)   | H11A—C11—H11C | 109.5       |
| O1—C4—C2     | 117.44 (19) | H11B—C11—H11C | 109.5       |
| N1—C4—C2     | 119.26 (19) |               |             |
|              |             |               |             |
| C5—N1—C4—O1  | -3.6 (4)    | C10—C5—C6—C7  | -2.1 (3)    |
| C5—N1—C4—C2  | 173.2 (2)   | N1—C5—C6—C7   | 177.9 (2)   |
| C1—C2—C4—O1  | -53.7 (3)   | O2—C6—C7—C8   | -179.8 (2)  |
| C3—C2—C4—O1  | 69.5 (3)    | C5—C6—C7—C8   | 1.1 (3)     |
| Br1—C2—C4—O1 | -173.2 (2)  | C6—C7—C8—C9   | 0.5 (4)     |
| C1—C2—C4—N1  | 129.2 (2)   | C7—C8—C9—C10  | -1.2 (3)    |
| C3—C2—C4—N1  | -107.6 (3)  | C7—C8—C9—C11  | 177.4 (2)   |
| Br1—C2—C4—N1 | 9.8 (3)     | C6—C5—C10—C9  | 1.4 (3)     |
| C4—N1—C5—C10 | 7.8 (4)     | N1—C5—C10—C9  | -178.5 (2)  |
| C4—N1—C5—C6  | -172.1 (2)  | C8—C9—C10—C5  | 0.2 (3)     |
| C10—C5—C6—O2 | 178.8 (2)   | C11—C9—C10—C5 | -178.4 (2)  |
| N1—C5—C6—O2  | -1.3 (3)    |               |             |

---

*Hydrogen-bond geometry (Å, °)*

| <i>D</i> —H··· <i>A</i>   | <i>D</i> —H | H··· <i>A</i> | <i>D</i> ··· <i>A</i> | <i>D</i> —H··· <i>A</i> |
|---------------------------|-------------|---------------|-----------------------|-------------------------|
| O2—H1H···O1 <sup>i</sup>  | 0.85 (1)    | 1.81 (1)      | 2.659 (2)             | 179 (3)                 |
| C1—H1C···O2 <sup>ii</sup> | 0.98        | 2.53          | 3.445 (3)             | 156                     |
| N1—H1N···Br1              | 0.87 (3)    | 2.47 (3)      | 3.031 (2)             | 123 (2)                 |

Symmetry codes: (i)  $x+1, y, z$ ; (ii)  $x-1, y, z$ .